

**Simplified soft seal system, incorporating HERION's unique T-Seal**

**Low maintenance and easy to service**

**Compact construction**

**Many configurations - air return, spring return or double air operated**

**Universal flow**



## Technical data

### Port Sizes

1/4", 3/8", and 1/2" NPT

### Fluid

Filtered air, lubricated or non-lubricated

### Fluid Temperature

15° to 105° F

Ambient Temperature

15° to 140° F

### Materials

Housing: Clear anodized aluminum

Seals: BUNA-N

### Options

Manifold mounting

"G" thread ports available (ISO 228/2)

Polyurethane seals

NOTE: Pilot pressure must be equal to or greater than system pressure. Do not restrict exhaust port no. 3 on these valves.

Description	Port size (NPT)	Nom. size (mm)	Cv factor	Operating pressure (psi)	Pilot pressure (psi)	Dim dwg	Spare parts kit	Valve part number
3 way (3/2) Air operated air return	1/4"	6	1.4	25-230	25-230	40	8110816000000000	4021370000000000
	3/8"	10	2.6	30-230	30-230	40	8110817000000000	4022070000000000
	1/2"	12	3.5	30-230	30-230	40	8110817000000000	4022071000000000
3 way (3/2) Double air impulse	1/4"	6	1.4	VAC-230	30-230	41	8110818000000000	4021470000000000
	3/8"	10	2.6	VAC-230	30-230	41	8110819000000000	4022170000000000
	1/2"	12	3.5	VAC-230	30-230	41	8110819000000000	4022171000000000
3 way (3/2) Air operated spring return	1/4"	6	1.4	VAC-230	50-230	42	8110829000000000	4021371000000000
	3/8"	10	2.6	VAC-230	50-230	42	8110828000000000	4022072000000000
	1/2"	12	3.5	VAC-230	50-230	42	8110828000000000	4022073000000000

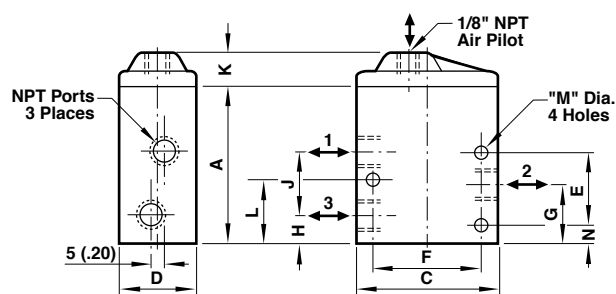


Fig. 40 Single air pilot

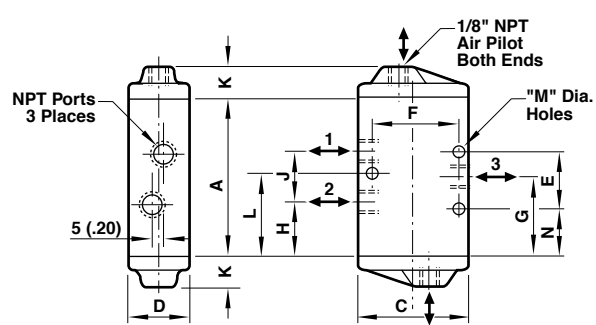


Fig. 41 Double air pilot

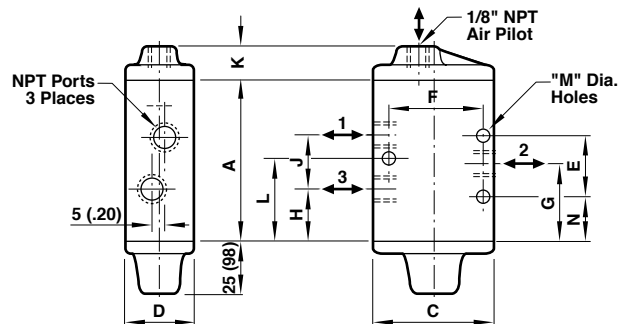


Fig. 42 Single air pilot - spring return

Figure Number	Valve Size	Dimensions											
		A	C	D	E	F	G	H	J	K	L	M	N
40	1/4"	59 (2.32)	55 (2.17)	30 (1.18)	27 (1.06)	41 (1.61)	23 (.91)	11 (.43)	24 (.94)	16 (.63)	24.5 (.96)	5.5 (.22)	7.5 (.30)
	3/8"	87 (3.43)	65 (2.56)	35 (1.38)	-	46 (1.81)	50 (1.97)	29 (1.14)	33 (1.30)	16 (.63)	77.5 (3.05)	7 (.28)	31.5 (1.24)
	1/2"												
41	1/4"	74 (2.91)	55 (2.17)	30 (1.18)	27 (1.06)	41 (1.61)	37 (1.46)	25 (.98)	24 (.94)	16 (.63)	38.5 (1.52)	5.5 (.22)	21.5 (.85)
	3/8"	83 (3.27)	65 (2.56)	35 (1.38)	-	46 (1.81)	44 (1.73)	25 (.98)	33 (1.30)	16 (.63)	73.5 (2.89)	7 (.28)	27.5 (1.08)
	1/2"												
42	1/4"	74 (2.91)	55 (2.17)	30 (1.18)	27 (1.06)	41 (1.61)	37 (1.46)	25 (.98)	24 (.94)	16 (.63)	38.5 (1.52)	5.5 (.22)	21.5 (0.85)
	3/8"	83 (3.27)	65 (2.56)	35 (1.38)	-	46 (1.81)	44 (1.73)	25 (.98)	33 (1.30)	16 (.63)	73.5 (2.89)	7 (.28)	27.5 (1.08)
	1/2"												

Dimensions in mm (inches)